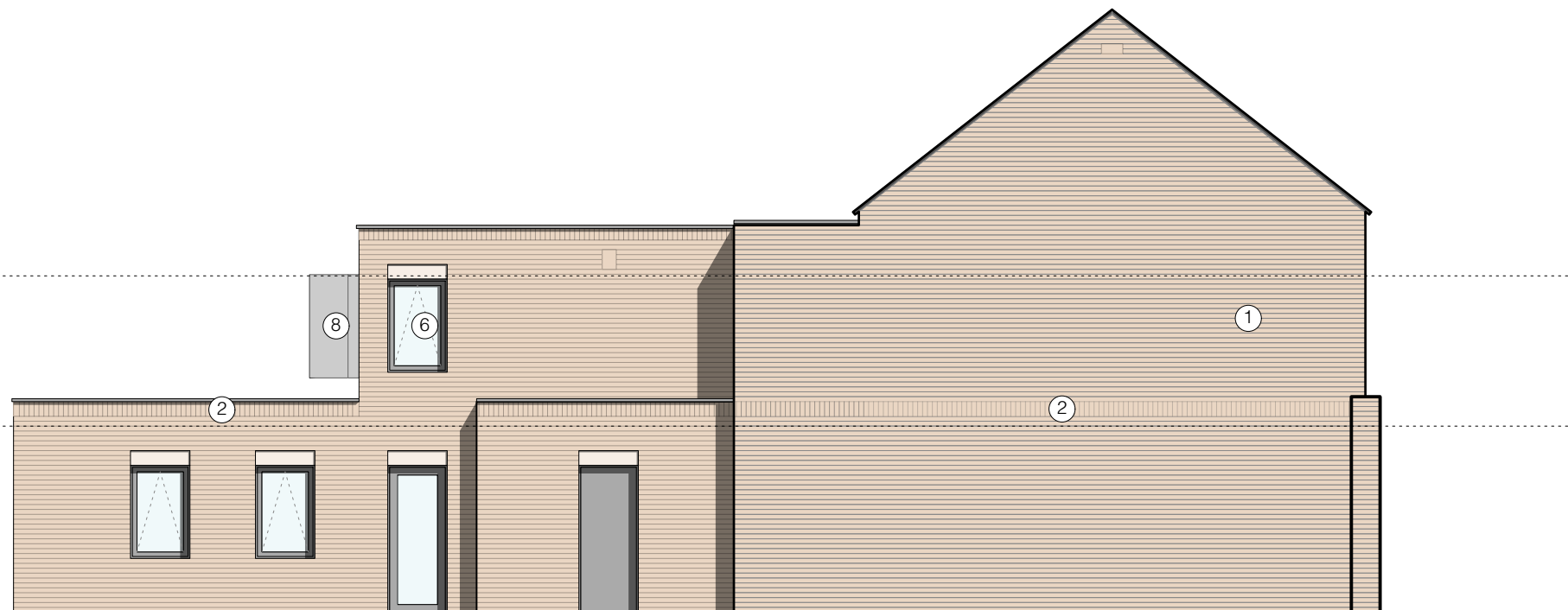
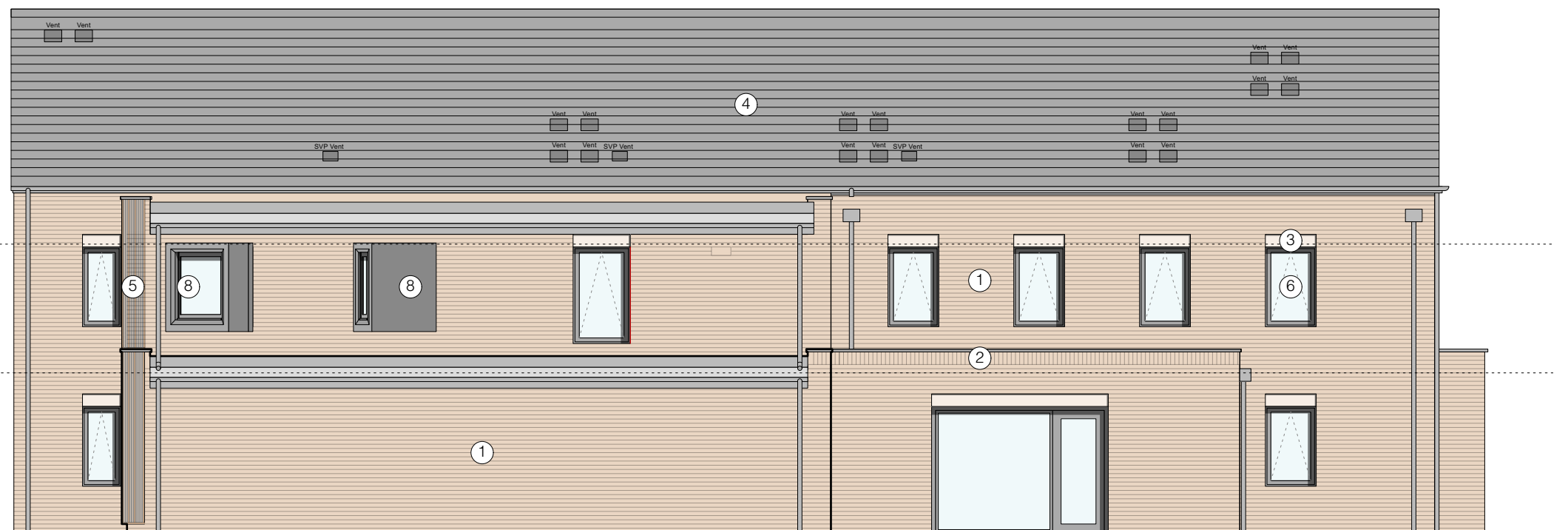


MATERIALS KEY

- ① Wienerberger Con Mosso 65mm buff brick or similar with white mortar.
- ② Soldier coursed Wienerberger Con Mosso 65mm buff brick or similar with white mortar.
- ③ Artstone lintel and/or sill colour TBC.
- ④ Marley-Eternit Fibre Cement Tiles with Marley continuous dry verge trim.
- ⑤ Ecoscape Forma Composite Slatted Board - Silver Birch
- ⑥ REHAU PVCu 'tilt-only' window or similar on 10 degree restrictor.
- ⑦ REHAU PVCu 'fixed' window or similar.
- ⑧ Oriel window angled to improve interfaces.

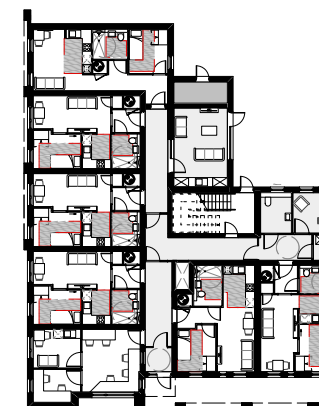


North West Elevation



North East Elevation

North West Elevation



North East Elevation

NOTES:

Drawing for planning purposes only.

Drawing Title: Proposed Elevations revision: D
 Date: 04/05/2023
 Drawing no: 1321-201
 Scale: 1:100 @ A3
 Drawn: EC



DK-Architects

26 Old Haymarket
 Liverpool
 L1 6ER
 0151 231 1209 T
 mail@dk-architects.com E
 www.dk-architects.com W